

KWedge User Manual



10394 Democracy Lane
Fairfax, VA 22030

Phone: 800 428-8643
Fax: 703 783-0319
E-mail: sales@mss-software.com

Table of Contents

1.0 Overview.....	1
2.0 Installation.....	1
3.0 Initial Settings	2
4.0 File Settings	2
5.0 File Transfer	3
6.0 Options	5
7.0 Support	5
Addendum	6

1.0 Overview

KWedge is a data transfer utility that replaces a hardware wedge device such as an Intermec 9730 Wedge reader. It allows data to be transferred character by character and line by line, from a barcode reader to a PC based program. The data will appear in the selected PC application as if it is being typed into the program. It provides an excellent means of transfer where other methods such as file transfers cannot be used.

KWedge was created by MSS Software and is used in conjunction with Microsoft Windows Mobile Device Center (WMDC). Once the connection is provided by the WMDC the KWedge takes over and transfers the data.

2.0 Installation Steps

- Setup Win Mobile Device Center
- Install KWedge
- Select Target application for data to be transferred to
- Dock barcode reader so data can be transferred

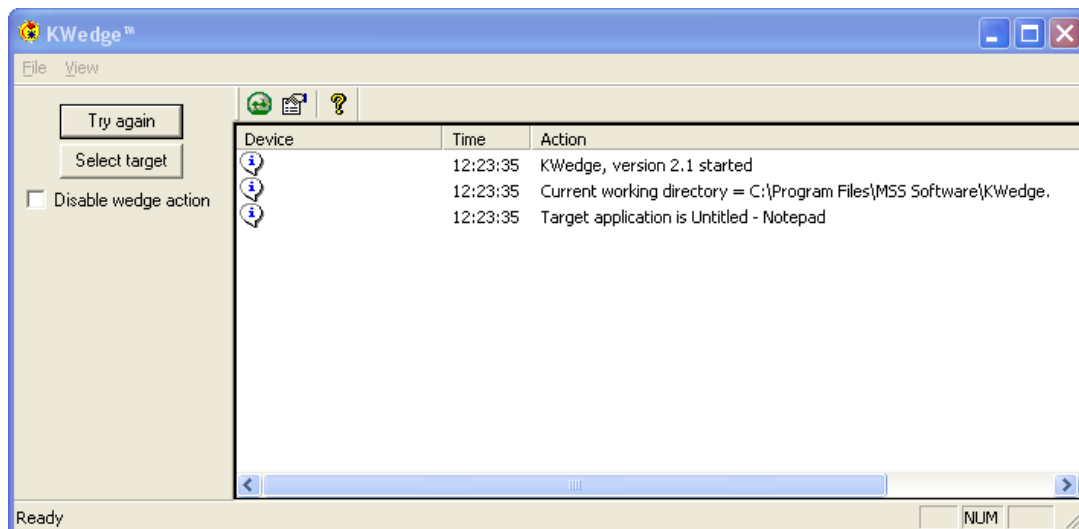


Figure 1. Screenshot showing installation is complete.

3.0 Initial Settings

There are several settings you may want to setup before using KWedge for the first time.

- **Select Target**—Most importantly, select a target application for the incoming data to flow to once the reader is docked and a WMDC connection has been established. For the VA, for example, you must start the VISTA application and then select it from the %Select target+button.

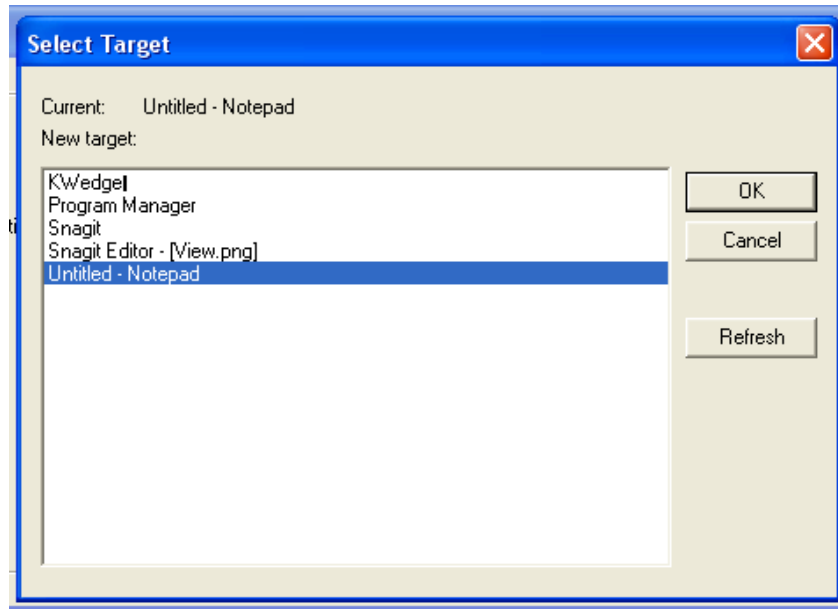


Figure 2. You must select a target application for the incoming data to flow into.

4.0 File Settings

- Under %Options+, you can setup several options, including sound features, warnings and status messages.

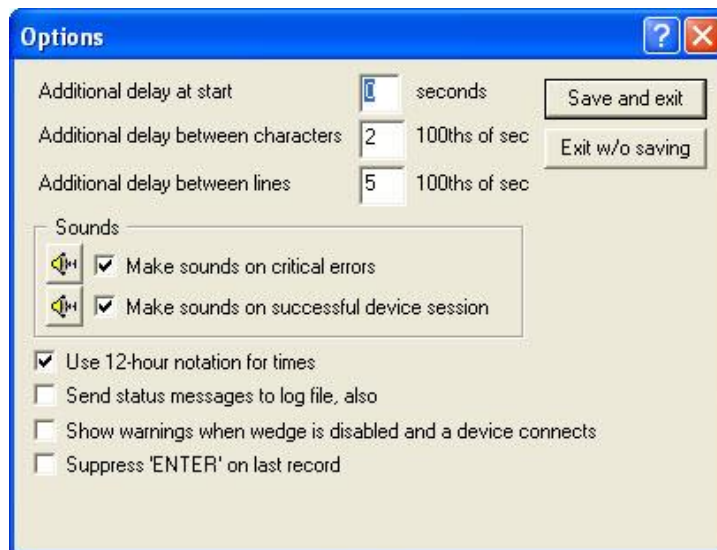


Figure 5. Screenshot of Options.

****Please Note:** You may or may not need to uncheck “suppress ‘ENTER’ “ on the last record, depending on your system.

5.0 File Transfer

Data is automatically transferred to the selected application once the barcode reader is placed in the dock, unless you put KWedge in manual mode. Manual mode is preferable where you must tell the reader to transfer the data when you are ready. To put KWedge in manual mode, make sure to check **Disable auto transfer**. Now, you must click the **Transfer** button on KWedge when you are ready to transfer the data.

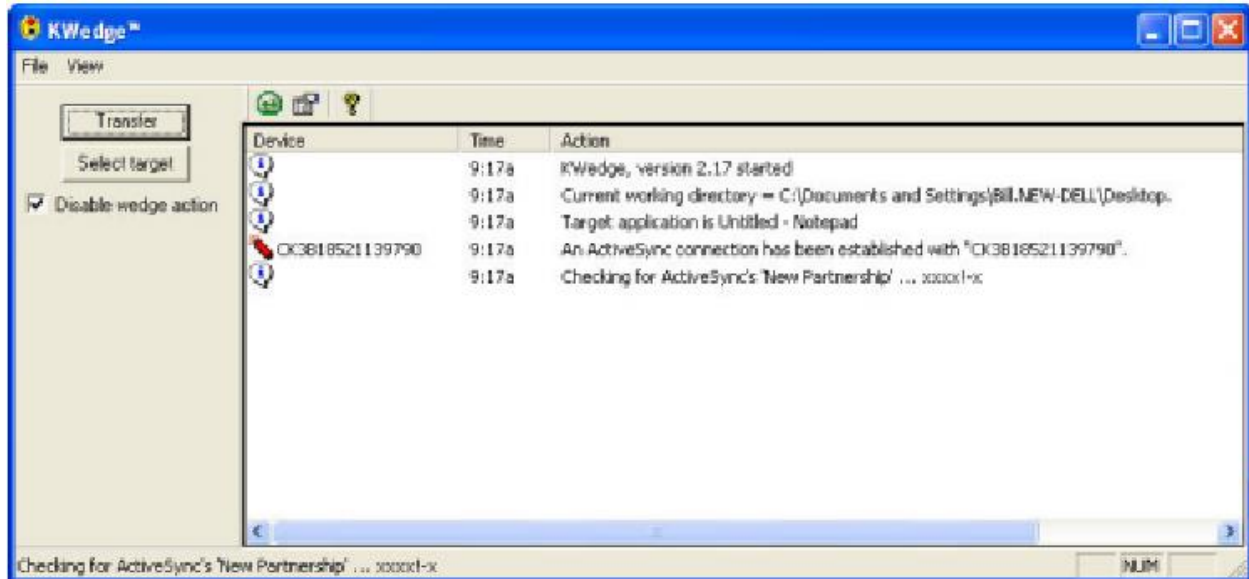


Figure 6. The KWedge configured for Transfer button operation.

In the manual mode when you are ready to move the data to the application on the PC, the reader must be docked and you must click on the **Transfer** button. The transfer of the data will automatically appear in the application as shown below in figure 7.

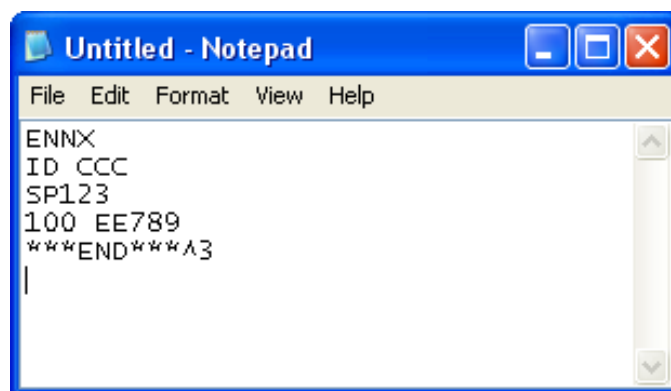


Figure 7. Data transferred as it appears in Notepad.

- Various messages will appear on the view screen of the KWedge indicating a successful transfer or other messages. See Figure 8 below for an example.













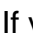
Device	Time	Action
	12:30:17	Target set to 'Untitled - Notepad'
 CK3A30710858116	12:30:33	Retrying wedge operation from "CK3A30710858116".
	12:30:36	Checking for ActiveSync's 'New Partnership' ... xxxx
 CK3A30710858116	12:30:37	Searching 'Flash File Store' ...
 CK3A30710858116	12:30:38	... processing ENNX ... 3 records sent; please check results
 CK3A30710858116	12:30:52	Flash File Store\ENNX.DAT has been deleted from the device.
 CK3A30710858116	12:30:52	Done.
 CK3A30710858116	12:30:57	Retrying wedge operation from "CK3A30710858116".
	12:31:00	Checking for ActiveSync's 'New Partnership' ... xxxx
 CK3A30710858116	12:31:01	Searching 'Flash File Store' ... nothing found.
 CK3A30710858116	12:31:...	No records found on device. Nothing more to do.
 CK3A30710858116	12:31:02	... CRITICAL error (above). Cannot continue.

Figure 8. Screenshot of “View Screen” of the KWedge.

- If you get a message with a  sign in red letters, this indicates a problem. Make sure you observe this screen during data transfer to be certain that everything goes smoothly. Once the file transfer has taken place, you will get the following message asking if it is okay to delete the file on the reader. **You must select “Yes” or “No” before continuing or removing the reader from the dock.**

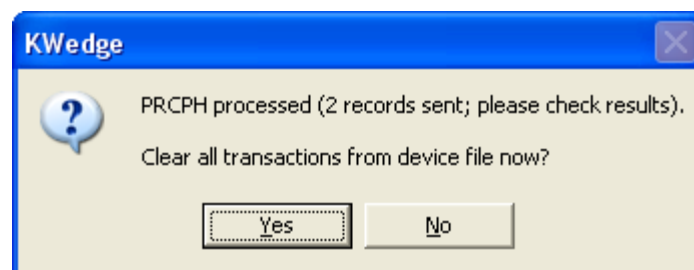


Figure 8. Screenshot of prompt to clear all transactions.

6.0 Options

KWedge has a host of features which allow it to operate automatically as well as to configure it for special applications. Click on the File and Options to see the list of Options:

- Disable/Enable Auto Transfer
- Delay Transfer by X seconds
- Delay between characters
- Delay between lines
- Enable/Disable sound on errors or successful data transfer
- Suppress %Enter+on last record

7.0 Support

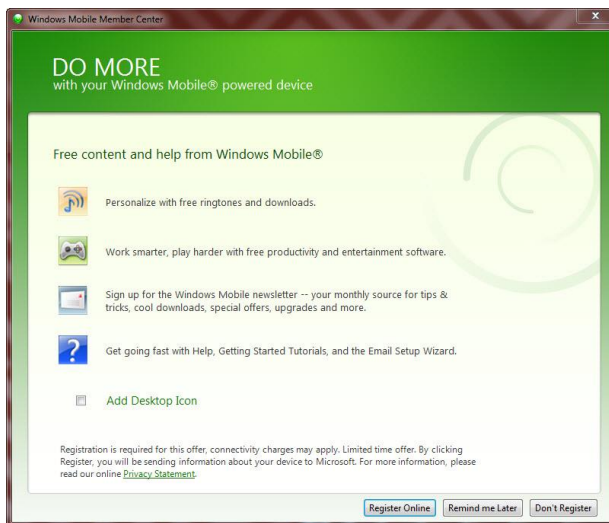
If you need help or cannot get the transfers to upload correctly, please call us at **800-428-8643**. One of our barcode specialists will be available to help you 8:30 am to 5:00 pm, Monday - Friday, Eastern standard time.

Addendum to KWedge Manual

In some instances it is better to establish a partnership with your barcode reader (CK3 for instance) within Windows Mobile Device Center. This has the added advantage of allowing the units to Sync faster and not have to load a driver each time the reader is synced. Please follow this procedure to sync your barcode reader with your transfer station or computer.

Partnership Setup

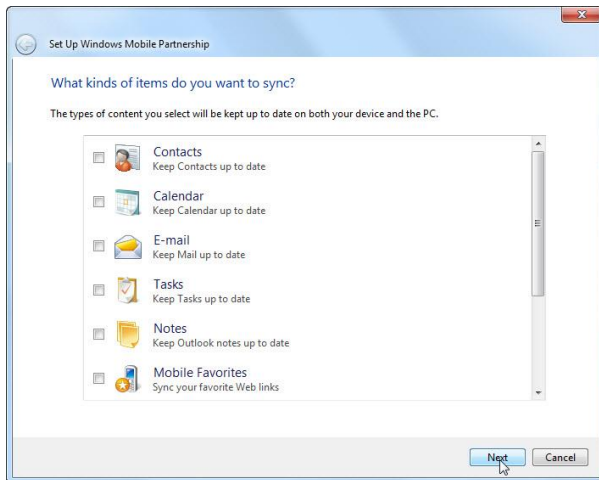
Dock reader and wait for Windows Mobile Device Center (WMDC) to appear (example is shown below). Click on **Don't Register** when this screen appears.



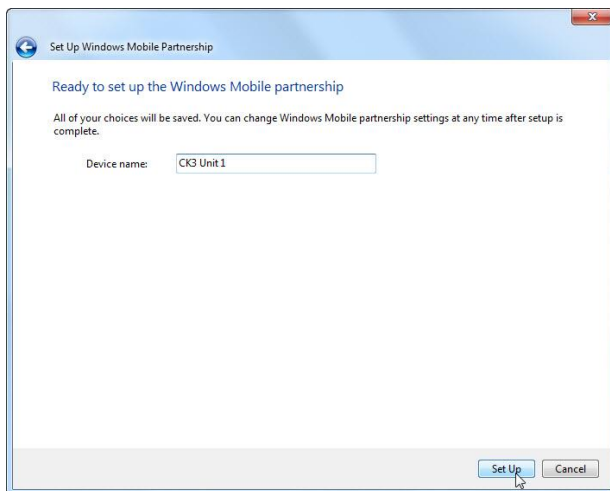
This Screen will appear next showing you are connected. Click on **Set up your device**.



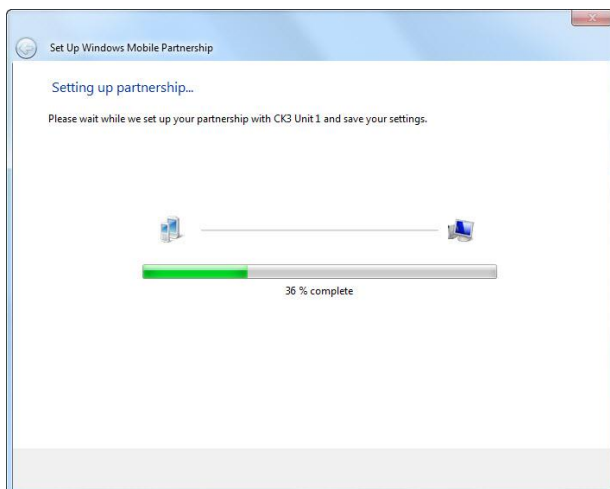
When this next screen appears, uncheck all the boxes (you do not want to sync anything from your computer's contacts, calendars, etc.). Then click Next.



You will want to name each one of your devices. Then click Setup.



After this you will see the process completing.



And finally you will be done when this screen appears. Notice that the name of the device is displayed.



Now, each time you dock your device it should sync automatically and you will see the name of the device that is connected. This will also allow KWedge to connect more easily.

